

1 Shepherd's House Manor Park Road
Chislehurst, BR7 5FT
T: 0208 304 0997
E: property@tracythorne-estates.co.uk



14 Castleridge Drive, Greenhithe
DA9 9WT
£2,500 Per month

Stunning and spacious extremely well presented four bedroom semi detached family home situated for let in the popular St Clements Lake development on landscaped grounds, located close to Bluewater Shopping Centre and Greenhithe Train Station.

Offering a driveway to the front for two cars, four bedrooms with three of them being double and two with en-suites, great sized open-plan living and dining area, a separate fully integrated kitchen and an integral garage.

On the ground floor, there is a welcoming entrance hallway, a downstairs Cloakroom, L-shaped open plan living room/dining room which leads out to the patio and lawned rear garden and has double doors which lead through to the kitchen. Fitted units in the kitchen have soft-close doors and drawers, and integrated appliances include a five-burner gas hob, double oven, fridge freezer, washer dryer and dishwasher.

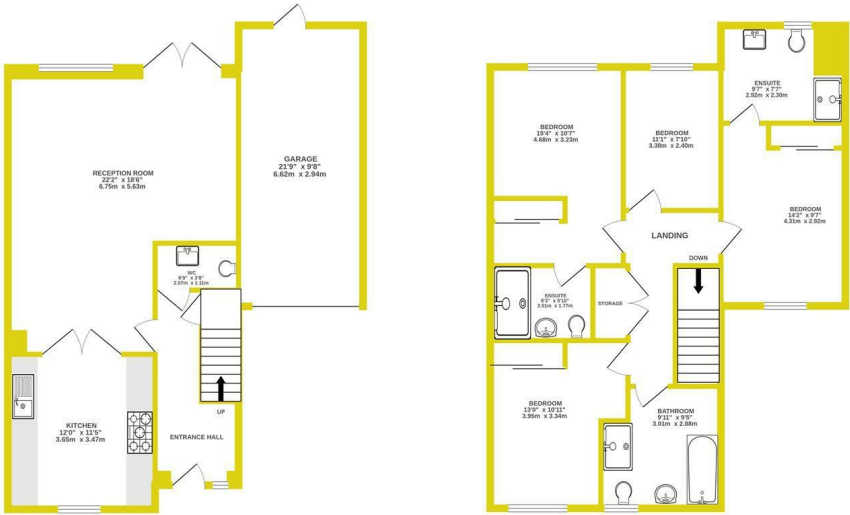
On the first floor, the master bedroom features a fitted wardrobe and an en suite with shower enclosure, the second bedroom also has an en suite shower room, there is a further double and single bedroom along with a 4 piece bathroom, Parking for two cars. Unrestricted parking for visitors and larger than average garage.





GROUND FLOOR
795 sq.ft. (73.9 sq.m.) approx.

1ST FLOOR
810 sq.ft. (75.3 sq.m.) approx.



TOTAL FLOOR AREA: 1606 sq.ft. (149.2 sq.m.) approx.
Whilst every attempt has been made to ensure the accuracy of the floorplan contained here, measurements of doors, windows, rooms and any other items are approximate and no responsibility is taken for any error, omission or mis-statement. This plan is for illustrative purposes only and should be used as such by any prospective purchaser. The services, systems and appliances shown here have not been tested and no guarantee as to their operability or efficiency can be given.
Made with Metropix (2020)

